



Cross International

Delivering Food, Shelter and Hope in the Name of Jesus

Stable Homes – Stable Families

Project 1630

Build safe, secure homes for impoverished Guatemalan families



CrossInternational.org/StableHomes



Tragically, poor families in Guatemala are living in makeshift houses built from whatever they can find — sticks, mud, scraps of metal and bits of wood. **My wife, Julie, and I were there last December to see these ourselves.** In one house (pictured here), snakes were literally coming through holes in the walls. Terrible conditions.

Imagine your children growing up like that, or you living in fear for their security and well-being. It just shouldn't be that way.

When the time comes to respond to God's call, it's our responsibility to "seize the moment" and play our roles in blessing others. Along with Cross International's ministry partner Hope of Life in Guatemala, the lives of impoverished families are being transformed forever.

Today, you can do the same. ***Stable Homes — Stable Families*** awaits. Let's accept His challenge and together provide safe housing for poor families while spreading the Good News of the Gospel. It's a challenging task, but your generous support can quickly and effectively bring hope to those who need it most.

Serving Christ together,

Kelly Miller
President, Cross International



My wife, Julie, with 5-year-old Monica, a Guatemalan child who needs a safe, sturdy home for her and her family.



The houses being planned are similar in appearance to the one pictured above.

Give them shelter from the storms...

In Guatemala's remote mountain villages, "home" is a relative term. Subsistence farmers and their families huddle in rickety shelters composed of any scraps they can find. Rainstorms shred their roofs and saturate their interiors with damp, muddy misery.

Your gift to Cross International can bless these families with a place to truly call home. Each family will receive a sturdy house with a concrete foundation, waterproof roof, two bedrooms, a living room, a lockable door and windows, plus (when possible) a toilet and washbasin.

Let's show these suffering families that our God is the hope and refuge of the vulnerable!

Project Goal

WHAT: Build 40 durable concrete homes to shelter 240 vulnerable children and their families.

WHY: To create stability and rescue families from unsafe living conditions, while calling them to faith in Christ.

WHERE: Remote villages in the mountains of Zacapa and Chiquimula in southeastern Guatemala.

WHO: Our local ministry partner, Hope of Life.

COST: \$348,760, or just **\$8,719** per home.



The Crisis is Immediate

Guatemala is one of the poorest countries in Latin America, and the hardships of struggling families can be difficult to improve because such a small part of the population actually owns land. This is one of the reasons owning a home is so important. It provides a stable foundation upon which a better life can be built.

Seven out of 10 poor Guatemalans live in rural areas, where they struggle to find work and buy food. Most are farmworkers, **making only \$3-\$4 a day**, and because the work is usually seasonal, many face serious financial problems when jobs are suspended. This is also why owning even a tiny plot of land is so difficult. Instead, most families must resort to leasing a place to build a makeshift shelter out of any materials they can find. It is estimated that well over **1 million houses in Guatemala are built of scavenged materials**.

These houses are often fragile — and a health risk. During the wet months from June to November, wind-driven rains blow through their walls and water flows through leaky roofs, turning dirt floors into mud pits. Of course, the flimsy walls also provide little privacy and no security, so families can easily fall prey to theft as well.

During the wet months... wind-driven rain blows through their walls and water flows through leaky roofs, turning dirt floors into mud pits.

We're Responding to Their Needs

Olga hopes that one day she will have a new home for her family.

Olga Garcia and her family live in El Remolino, near the garbage dump. Every day, she scrounges at the dump while her husband labors in the melon fields. Together, the family brings in the equivalent of \$20 to \$25 a week. They live in pervasive poverty, with no running water or indoor sanitation. When they want to buy something, they don't use currency. Instead, they trade scavenged junk.

When asked about her hopes and dreams, Olga broke down in tears before sharing, "I would like to see my kids go to college. My daughter does so well in school. What I pray for most is a new house."

Please — join our effort to provide a new house for this suffering family and others like them. Beyond providing a safe and sturdy environment for the children, we can bring them new hope and a greater connection to the love of Christ!



Handicapped, homebound and crawling on a dirt floor.

When Hope of Life met Delmy Amador, the handicapped girl was so near death's door that her parents had already built a coffin for her. The ministry rescued Delmy from starvation but realized there was another problem to solve.

Because of her disfigured legs, Delmy can only move by crawling on hands and knees. But her house has no floor — just dirt! Her family desperately needs a sturdy, clean home with a real floor so Delmy can more easily and safely maneuver herself without having to be carried. ***You can help make that happen!***

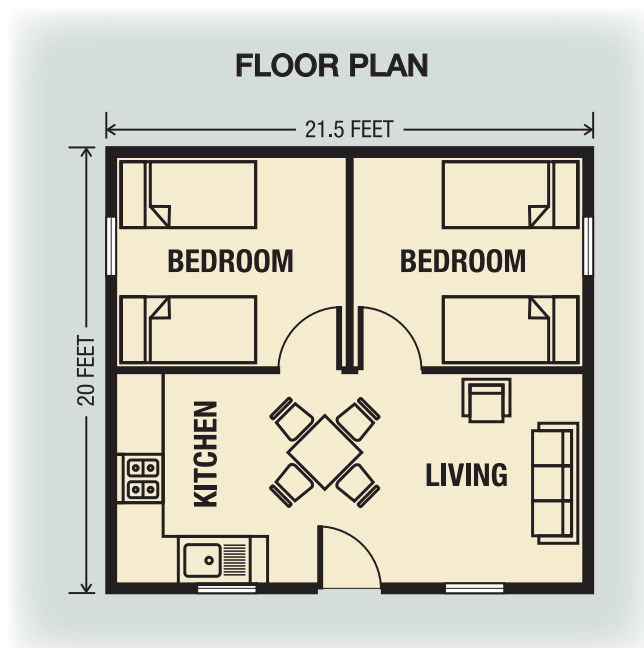
What Your Donation Will Fund

While every gift we receive will be valued and deeply appreciated, it will cost approximately **\$8,719** for a family to be blessed with a sturdy concrete house with a solid cement foundation and strong corrugated metal roof.

Families who previously lived in makeshift shacks will enjoy the long-term stability of professionally constructed homes — each with two bedrooms, a living room, and a lockable door and windows. The plan also includes providing a bathroom or toilet for each house, so the families can enjoy good health and a more sanitary environment.

By U.S. standards, these houses may be considered basic, but to Guatemalan families who have been stretching every penny to pay rent for a patchwork shanty, they will be an answer to prayer.

The housing project will produce a second important blessing. Participants who don't already own land will be awarded an interest-free loan with low monthly payments, allowing them to purchase the land on which their new house rests. Since the small payments are lower than what they have typically paid as rent, the families will ultimately own both land and a sturdy new home without having to take on a financial burden they could never afford.



Each recipient family provides "sweat equity," working alongside a skilled construction crew to help in the building process. Through this hands-on process, families gain a sense of dignity and ownership while learning there is a God.

Partner Support

PROJECT BUDGET

Cost Per Home: \$8,719

COST ITEMS	AMOUNT
Labor & Contracted Fees	\$1,620
Cement	\$1,223
Sand	\$288
Gravel	\$360
Cement Blocks	\$972
Steel Rebar & Rods	\$1,159
Doors & Windows	\$610
Roofing, Wood & Paint	\$776
Fuel Costs	\$108
Sanitation Facility	\$60
Misc. Construction Materials	\$96
Program Management	\$654
Project Contingency	\$793
Total	\$8,719

A gift to Cross International will do so much more than just provide a sturdy new home for a struggling family. It will leave a lasting legacy that will literally change lives and hearts for eternity.

The following sponsorship levels will be instrumental to this ambitious project's success. Choose one of these levels as your goal or indicate a different amount if you feel so led, and know that whatever amount you give, your support and prayers will be deeply appreciated. We promise to honor your generosity by being good stewards of your gift.



40 Homes / 240 Recipients

TOTAL AMOUNT NEEDED: \$348,760

— Sponsorship Levels —

- **\$43,593** builds **FIVE homes** for families in need.
- **\$17,437** builds **TWO homes** for families in need.
- **\$8,719** builds **ONE home** for a family in need.
- **\$4,359** joins with another generous contributor to build a home.
- **\$3,045** provides the **cement, sand, gravel and cement blocks** for one home.
- **\$1,605** provides the **doors, windows, roofing, wood and paint** for one home.
- And of course, **any level of support** is greatly appreciated.

Our Promise to You!

Proceeds from this campaign will be used to cover any expenditures for this project incurred through June 30, 2019, the close of our ministry's fiscal year. In the event that more funds are raised than needed to fully fund the project, the excess funds, if any, will be used to meet the most urgent needs of the ministry.

Our Mission

We mobilize the global Church to transform the poor and their communities materially and spiritually for the glory of Jesus Christ.

How We Serve

Rather than create new institutions to distribute aid, we support existing ministries and churches already serving the poor. In addition to being the most cost-effective way of helping the vulnerable, empowering these ministries allows us to support the Church's spiritual mission and its important position of leadership in poor communities.

Good Stewardship

We consider every gift we receive as a precious resource from God. We direct every donation to its intended project, provide honest and accurate reports to our donors, and keep overhead costs to an industry low. We handle funds with utmost integrity and hold our ministry partners in the field to the same high standards by asking them to document costs and the impact of their outreach. These detailed accountability measures have earned us ongoing accreditation by the following organizations:



Enhancing Trust



The Chronicle of Philanthropy
The nonprofit world's No. 1 news source



600 SW 3rd Street • Suite 2201 • Pompano Beach, Florida 33060
800-391-8545 • CrossInternational.org

@CrossInternational @CrossIntl @CrossIntl /CrossInternational CrossFieldBlog.com

Copyright Cross International. Cost-effectively written, designed and printed in-house. [tm1902]